



PRICE  
2024

By Out d'Ôr



  
Handivoyage.net

Rue Robert Baltie,  
01600 Trévoux  
04 74 08 44 83  
[contact@kanopee-village.com](mailto:contact@kanopee-village.com)  
[www.kanopee-village.com](http://www.kanopee-village.com)



# CARAVANS, MOTOR HOMES ET TENTS

(A day in our camping is counted from 14 am to 14 am)

An identitycard will be asked during your registration

Reception open from 8h30 am to 12H and 2h pm to 7h pm



LOW SEASON : 01/04 TO 06/07 AND 26/08 TO 30/09

HIGH SEASON : 06/07 TO 26/08



4.5 HECTARES (NUMBER OF PITCHES: 183)		LOW SEASON	HIGH SEASON
RATE APPLICABLE UNTIL 1 MARCH 2024	« CAMPING » NATURE PACKAGE PITCH + 1 VEHICLE + 2 PERSONS	17,00 €	23,00 €
	PACKAGE «CYCLING / HIKING» PITCH + 1 PERSON	12,00 €	16,00 €
	PACKAGE «COMFORT» PITCH + 1 VEHICLE + 2 PERSONS + ELECTRICITY 10 A + WATER	22,50 €	28,50 €
	EXTRAS		
	ADULT	5,00 €	5,00 €
	CHILDREN FROM 2 TO 7	4,00 €	4,00 €
	CHILDREN BELOW 2	Gratuit	Gratuit
	EXTRA TENT	2,50 €	2,50 €
	EXTRA VEHICLE	2,00 €	2,00 €
	PETS	2,00 €	2,00 €
	ELECTRICITY 10 A + WATER	5,50 €	5,50 €
	DOUBLE AXLE CARAVAN	40,00 €	40,00 €
	ADULT VISITOR + 2 HOURS	3,00 €	3,00 €
	LOCAL ACCOMODATION TAX	0,55 €	0,55 €
	ECOLOGICAL TAX	0,65 €	0,65 €

CANCELLATION GUARANTEE REFUND WITHOUT ANY EXPLANATION UP TO D-2 PRIOR TO ARRIVAL 3€/DAY

MAXIMUM CAPACITY FOR A CAMPING PITCH IS 6 PEOPLE AND 3 TENTS

## RENTALS

(A day in our camping is counted from 4 pm to 10 am)

An identitycard will be asked during your registration

LOW SEASON : 01/01 TO 06/07 AND 24/08 TO 31/12

HIGH SEASON : 06/07 TO 24/08

CANCELLATION GUARANTEE REFUND WITHOUT ANY EXPLANATION UP TO D-2 PRIOR TO ARRIVAL 5€/DAY

N° d'enregistrement de l'établissement : C01-047401-004

Par décision en date du 26/05/2023

# LODGE 4/6 PERSONNES PMR

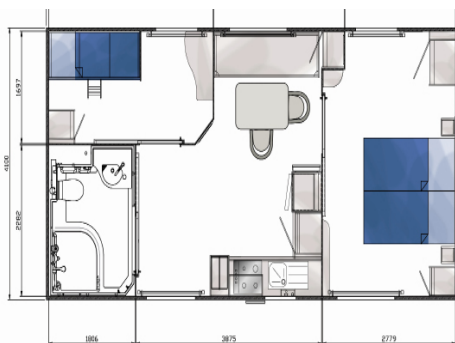
(01/01 TO 31/12)

Construction year : 2015

Floor area of 34 m<sup>2</sup> and a terrace of 16 m<sup>2</sup>

a living room with a kitchen corner, two bedrooms and one bathroom. Can accomodate 4/6 people, first bedroom with a double bed (160 x 190), second bedroom with a bunkbed (70 x 190) and a convertible sofa in the living room.

Television included, tassimo® coffee maker



	LOW SEASON	HIGH SEASON
1 NIGHT (WEEK)	64€	-
FRIDAY	95€	-
SATURDAY	195€*	-
WEEK-END	195€	-
WEEK	395€	814€

LODGE 4/6 PMR (AVAILABILITY : 1) FOR 4/6 PEOPLE

# LODGE 5/7 PERSONNES

(01/01 TO 31/12)

Construction year : 2018

Floor area of 40 m<sup>2</sup> and a terrace of 16 m<sup>2</sup>

a living room with a kitchen corner, two bedrooms and two bathroom. Can accommodate 5/7 people, first bedroom with a double bed (160 x 200), second bedroom with a bunkbed 160 x 190) and a convertible sofa in the living room (130°190).

Television included, tassimo® coffee maker



	LOW SEASON	HIGH SEASON
1 NIGHT (WEEK)	84 €	-
FRIDAY	110 €	-
SATURDAY	244 €	-
WEEK-END	244 €	-
WEEK	445 €	1 019 €

LODGE 5/7 (AVAILABILITY : 6) FOR 5/7 PEOPLE

# LODGE 6/8 PERSONNES

(01/01 TO 31/12)

Construction year : 2015

Floor area of 38 m<sup>2</sup> and a terrace of 16 m<sup>2</sup>

a living room with a kitchen corner, three bedrooms and two bathrooms. Can accomodate 6/8 people, first bedroom with a double bed (160 x 190), second bedroom with two single beds (90 x 190), third bedroom with a bunkbed (90 x 190) and a convertible sofa in the living room.

Television included, tassimo® coffee maker



	LOW SEASON	HIGH SEASON
1 NIGHT (WEEK)	104 €	180 €
FRIDAY	125 €	220 €
SATURDAY	259 €	220 €
WEEK-END	259 €	FROM 400€ TO 440€
WEEK	510 €	1 119 €

LODGE 6/8 (AVAILABILITY : 13) FOR 6/8 PEOPLE

# CHALET PERCHÉ KANOPÉE

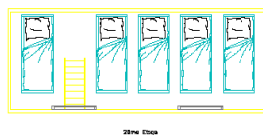
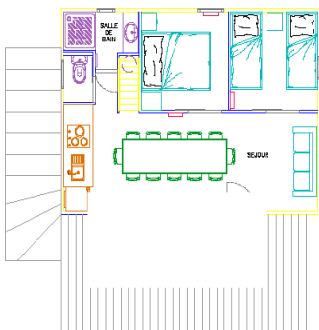
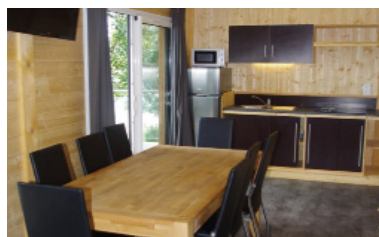
(01/01 TO 31/12)

Construction year : 2014

Floor area of 35 m<sup>2</sup> and a terrace of 15 m<sup>2</sup>

Kitchen corner in the living room (fridge, microwave, coffee machine, 3 induction hobs), shower with a separate toilet. One bedroom with a double bed (140 x 190), a second bedroom with two single beds (90 x 190) and a mezzanine with 5 single beds (90 x 190) and a convertible sofa for 2 people.

Television included, tassimo® coffee maker



**- Cabane -**



	LOW SEASON	HIGH SEASON
1 NIGHT (WEEK)	124 €	230 €
FRIDAY	155 €	260 €
SATURDAY	319 €	260 €
WEEK-END	319 €	FROM 490€ TO 520€
WEEK	670 €	1 279 €

CHALET PERCHÉ (AVAILABILITY : 10) FOR 9/11 PEOPLE

# RENTAL INVENTORY OF THE CAMPSITE

## DISHES

- Dinner plates
- Soup plates
- Dessert plates
- Bowls
- Mugs
- Glasses
- Lemonade glasses
- Wine glasses
- Coffee spoons
- Soup spoons
- Forks
- Knives
- Wooden spoon
- Econome
- Louche
- Salad servers

## LITERY

- Pillows
- Blankets for 1 person
- Blankets for 2 people

## KITCHEN

- Cutlery tray
- Salad bowl
- Can opener
- Corkscrew
- Cutting board
- Plate coaster
- Stove(s)
- Saucepan(s)
- Cover
- Does it all.
- Wringer
- Strainer
- Water pitcher
- Serving dish(s)
- Microwave
- tassimo© coffee maker
- Frige

## TERRACE AND LIVING ROOM

- Garden table
- Garden chairs
- 2 Deckchairs
- flat-screen TV

## MAINTENANCE

- Doormat
- Hangers
- Bucket
- Shovel + brush
- Broom
- Spanish broom
- Clothes hanger
- Trash can
- Bassin
- Toilet brush

# ADDITIONAL SERVICES

## EXTRAS

- Sheets, towel : 8 €/person
- Sheets : 4,50 €/person
- Baby package (rent of a baby high chair and a baby bed) : 3,50 €/day
- Final cleaning : 100,00 €
- Ménage réduit : 59 €
- Access to Internet (Wifi) : 2 €/1 h ; 3.5 €/1 day ; 15 €/week
- Washmachine : 5,00 €/coin
- Drymachine : 5,00 €/coin
- Electric car charging : 15,00 €/day

---

## OPTIONAL ASSURANCE

- Cancellation guarantee for pitch (up to 2 day prior to the arrival date) : 3,00 € /jour
- Cancellation guarantee for accomodation (up to 2 day prior to the arrival date) : 5,00 € /jour

## BOOKING FEES.

- Camping booking fees : 3,00 €
- Accommodation reservation file fees: 29 €
- Cash Cheque CB Bank Transfer

EURL KANOPEE VILLAGE  
capital social : 7 500€  
RCS : Bourg-En-Bresse B 792 412 983  
FR15792412983  
Siret : 79241298300019



# RESERVATION CONTRACT

Name : \_\_\_\_\_

Firstname : \_\_\_\_\_

Address : \_\_\_\_\_

Postal code : \_\_\_\_\_ City : \_\_\_\_\_

Country : \_\_\_\_\_

Phone : \_\_\_\_\_

E-mail : \_\_\_\_\_

## FAMILY MEMBERS

Name : \_\_\_\_\_ Firstname : \_\_\_\_\_ Date of Birth : \_\_\_\_\_

Name : \_\_\_\_\_ Firstname : \_\_\_\_\_ Date of Birth : \_\_\_\_\_

Name : \_\_\_\_\_ Firstname : \_\_\_\_\_ Date of Birth : \_\_\_\_\_

Name : \_\_\_\_\_ Firstname : \_\_\_\_\_ Date of Birth : \_\_\_\_\_

Name : \_\_\_\_\_ Firstname : \_\_\_\_\_ Date of Birth : \_\_\_\_\_

Pets : \_\_\_\_\_ ☐ Yes ☐ No

Kind : \_\_\_\_\_

## CHALETS / MOBIL HOMES

☐ Mobil-home Lodge 4/6 PMR

☐ Mobil-home Lodge 5/7

☐ Mobil-home Lodge 6/8

☐ Chalet Perché Kanopée 9/11

## CARAVANS / MOTOR HOMES / TENTS

☐ Tent

☐ Caravan

☐ Motor homes

☐ Electricity

☐ Extra vehicle

## CANCELATION ASSURANCE

Accommodation cancellation assurance: 5 € /day (details in sales of term)

Camping cancellation assurance: 3 € /day (details in sales of term)

## ARRIVAL AND DEPARTURE

Arrival date : ...../...../..... Departure date : ...../...../....

Number of nights : \_\_\_\_\_

Terms of sale have been readed and accepted

Sign :

# SERVICES OF THE CAMPSITE

- Bread depot
- Small grocery store
- Rental of equipment
- Loan of equipment
- Self-service washing machine and dryer.
- Access to wifi (free at the reception, paying on site)



# GENERAL CONDITIONS OF SALE OF THE CAMPSITE « KANOPEE VILLAGE »

The present terms and conditions cover all holiday rentals at Kanopée Village. They are considered as an integral part of any contract made out between the campsite and the customer. A campsite pitch rental or a holiday rental implies the total acceptance of the terms and conditions by the contracting parties. The present contract is not subject to the conditions as specified in a tenancy agreement, but to those of the decree 93-39 of 11/01/1993 from the judgment of 11/01/1993 presiding over the camping/caravanning industry.

## • Booking procedure:

Bookings are treated from 1st January in a chronological order according to the reception by our service. Please be aware that a booking is strongly advised, particularly for the months of July, August and September. You can book directly online (<https://www.kanopee-village.com>) or make an option by post or by email. In return you will receive 2 booking forms. You then have 10 days to confirm this option by returning one booking form completed and signed together with an advanced payment of of 30% of the total amount of the booking (deadline to be respected according to the post office stamp date). Your booking is only confirmed on receipt of the these documents by our service. We will then send you a confirmation by return. The rental of a camping pitch or of a chalet, mobile-home accommodation indicates full acceptance of the sales terms by the contracting parties.

## • Camping pitch hire :

We will provide you with an empty camping pitch, for up to 6 people, on which to install your tent, caravan or camping car between 1st April until 30th September.

Camping pitch fee: Rates are calculated per overnight stay. The price is in Euros, VAT included, not including tourist tax (0.55€/adult/day). Places are available from 14:00 on the day of arrival and must be vacated before 14:00 on the day of departure. Any overrun of the departure deadline will result in invoicing for an additional day. The fixed fee includes: a structure and a vehicle. This fixed fee gives free access to the sanitary arrangements, reception area, and the game areas and entertainment activities (in July and August). Some prices may include 1 or 2 people (see if specified on the price list).

Supplements: Additional people (adults or children) or additional items occupying the camping place (second vehicle, animal , etc.) will be the subject of a daily supplement. Please note : the places are given without any difference, according to the booking rank. The Management reserves the right to modify the place number when the camper arrives.

## • Accommodation rental :

Rental season definitions: Please refer to the price lists.

Rental periods and duration: Rentals are available by the week or by the night. The price indicated is in Euros, VAT included, not including tourist tax (0.55€/adult/day), éco participation ( 0.65€/adult-day)

The rental fee includes: accommodation rental, ancillary costs (water, gas, electricity, up to a limit of 200 kW per week), access to the reception area, swimming pool (between the dates it is open), and the games areas and entertainment activities (in July and August).

Rentals are available from 4 pm on the day of arrival and must be vacated before 10 am on the day of departure. Any overrun of the departure deadline will result in invoicing for an additional day.

Transfer, sublet: All accommodation rental is nominative and in no event whatsoever can be ceded or sub-let.

Guarantee deposit : On arrival, tenants must leave a guarantee deposit of 300€. To pay it, a credit card, bank check or cash is required. This will be returned to them on the day of departure after a premises check and an outgoing inventory is found to be correct. Should this not be the case, the following sums will be deducted from the guarantee deposit:

The value of any missing items

A fixed sum of 100€ for premises considered not to have been properly cleaned. The amount of any repairs for damage for which the occupier is responsible.

The amount of the repairs higher than the deposit will be billed to the occupier after deduction of the deposit.

## • Payment :

Reservations only become effective after confirmation by our reservation services and payment by the tenant of an advanced payment. Booking fees are 3€ for a camping pitch and 15€ for a rental.

Camping pitches : the balance for the period of occupation should be paid 21 days before the day of arrival.

Rentals : The balance of the rental sum should be paid 21 days before the day of arrival, otherwise it will be debited automatically.

Modification of booking :

Late arrival / early departure cannot be refunded. In the absence of information from you before 7.30pm the evening of your planned arrival, we reserve the right to cancel your booking without refund.

## • Special offers - Last minute deals :

When it occurs, some customers may pay a different price for the same stay. The difference between the price actually paid and the special offer price will not be paid back to the customers who paid the higher amount, in any way. Special

offers cannot be combined with any other promotional offers.

#### • Cancellation :

If the cancellation is incurred by the campsite: Exceptionally we may have to cancel your booking for safety reasons or in exceptional unavoidable circumstances. We will, where possible, offer you an alternative which you are not obliged to accept. In this case, will refund the total amount already received.

In the case of cancellation during your stay: due to uncivil behavior or disrespect of the internal regulations, we reserve the right to expulse anyone from the campsite. All sums received will be kept by the campsite. The nights spent on site will be due.

In the event of cancellation by the customer: a written notice must be made (by registered post or email with receipt of reception). If no notice is given, the customer is upheld to pay the totality of the sum due according to the booking form. The campsite reminds you that according to article L.121-20-4-2° of the rights of the consumer, right of retraction does not apply to accommodation, transport, restauration and leisure activities supplied on a date for a pre-determined period.

#### • Cancellation scale:

Between the reservation and 21 days before the date of arrival: the pre-payment is retained which corresponds to the payment of cancellation costs.

Less than 21 days before the date of arrival or in case of a no-show: the total cost is payable.

#### • Optional cancellation guarantee:

We offer an optional cancellation guarantee which covers all these different costs. The cost of the guarantee is 5€ per night for a rental and covers all eventualities whatever the reason. If this option is taken, the total cost of the stay (minus booking fees 29€ and guarantee fee) will be refunded D-2. The cost of the guarantee is 3€ per night for a camping pitch and covers all eventualities whatever the reason. If this option is taken, the total cost of the stay (minus booking fees 3€ and guarantee fee) will be refunded up to D-2L.

#### • Period of Withdrawal :

In accordance with article L.121-20-4-2° of the Consumer Code, there is no right of withdrawal.

Indeed, the right of withdrawal cannot be used for contracts for (for example) the provision of accommodation.

#### • Means of payment accepted:

bank card (Visa-Mastercard-Maestro) from 10€ on line by payline or on site French bank cheque payable to Camping Kanôpée Village  
chèque vacances  
- bank transfer : IBAN :FR 76 1780 6006 2662 2611 6213 510  
BIC : AGRIFRPP878

cash (on site or money order) for a maximum of 300€ per stay with different dates (art. 19 LFR 2013) Any bank charges are for the cost of the customer.

#### • Campsite rules and regulations:

Every camper is expected to comply with the campsite rules, under penalty of sanctions that may result in the cancellation of the contract.

Consumer Mediator: In accordance with the provisions of Article L 1612-1 of the Consumer Code, every campsite customer has the right to seek a consumer mediator free of charge with a view to amicably settling any dispute between himself and the operator of the land. The details of the consumer mediator that the customer can call upon are as follows: Referral by Internet by filling out the form provided: [www.sasmediationsolutions-conso.fr](http://www.sasmediationsolutions-conso.fr) Referral by email: [contact@sasmediationsolutions-conso.fr](mailto:contact@sasmediationsolutions-conso.fr) Referral by post: 222 Chemin de la bergerie 01800 Saint Jean de Niois

